

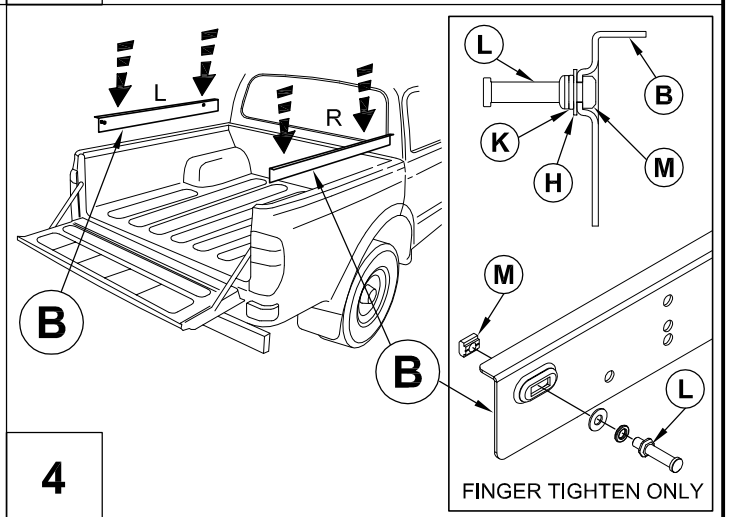
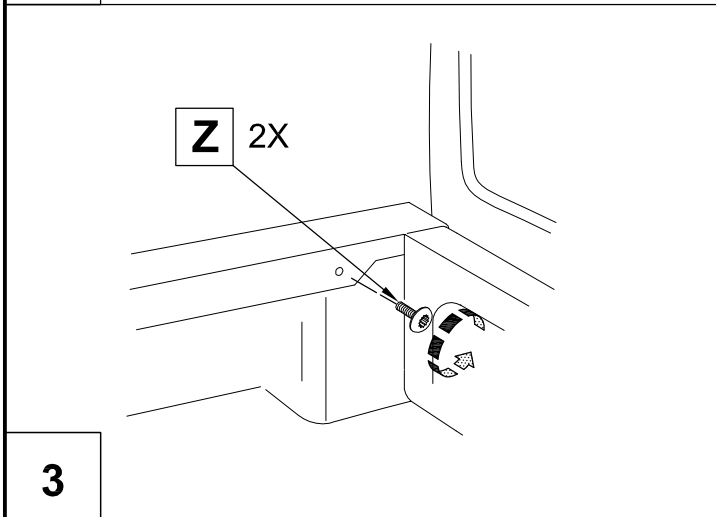
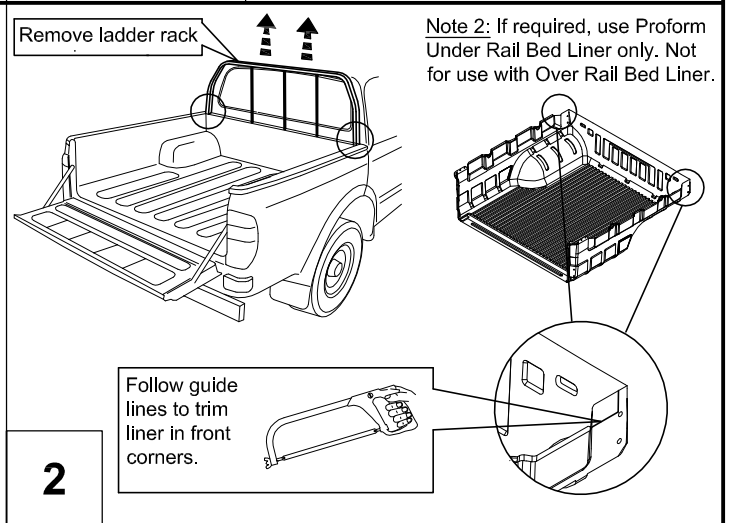
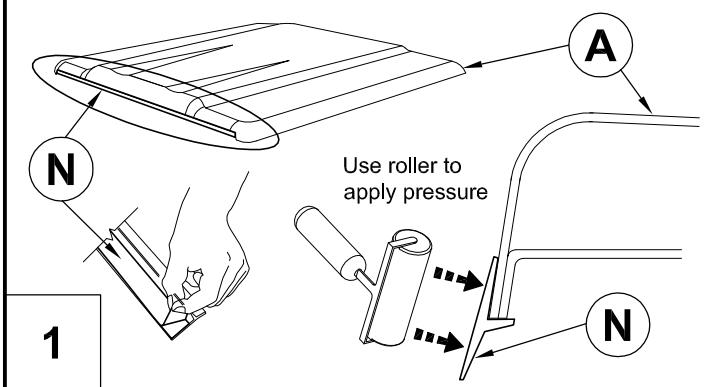


INSTALLATION INSTRUCTIONS (K134)

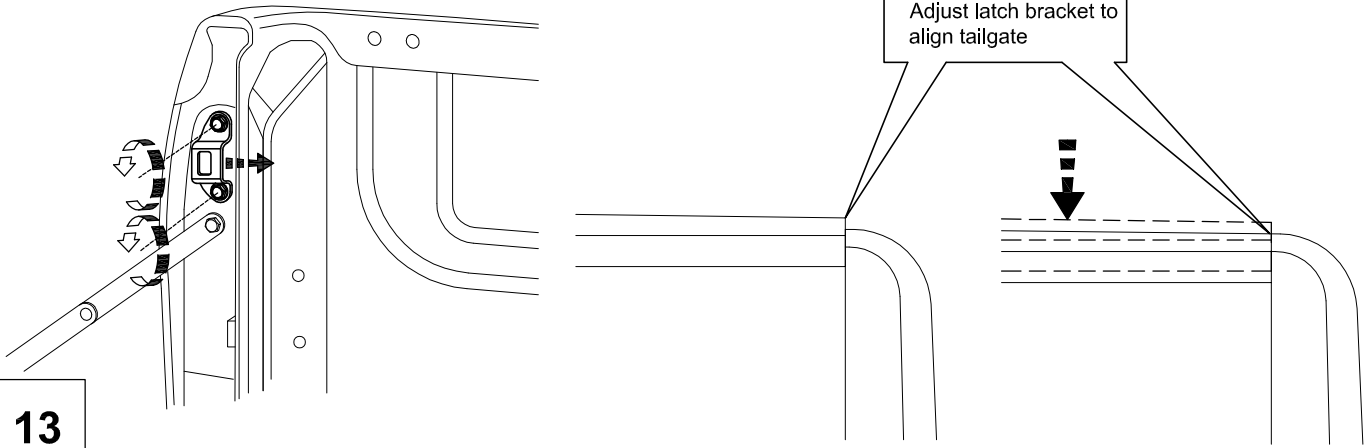
Isuzu RT50 D Max 2016 Double Cab Sportlid 1

A 1X	B 1X	C 1X	D 2X
E 1X	F 2X	G 2X	H 8X
I 1X	J 4X	K 2X	L 2X
M 2X	N 2X	Z 1X	<p>Note 1: If at any stage of installation you find your sportlid to be an unacceptable fit please contact the manufacturer before continuing.</p> <p>Note 2: If required, use Under Rail Bed Liner only. Not for use with Over Rail Bed Liner</p> <p>Tools Required: 4mm Allen key, 13mm Wrench, 14mm Wrench</p>

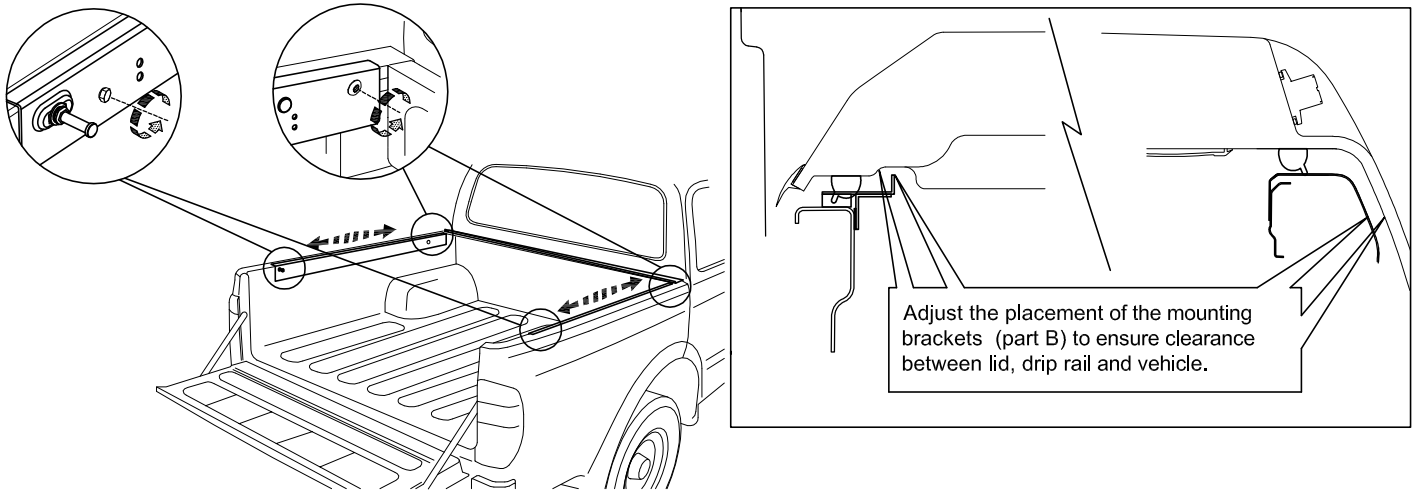
RAIN SEAL MUST BE APPLIED AFTER PAINT PROCESS IS COMPLETE
 DO NOT apply below 15°C.
 DO NOT stretch when applying.
 Apply pressure to seal. Adhesive is pressure activated.
 Allow 3hrs minimum to cure before fitting lid.



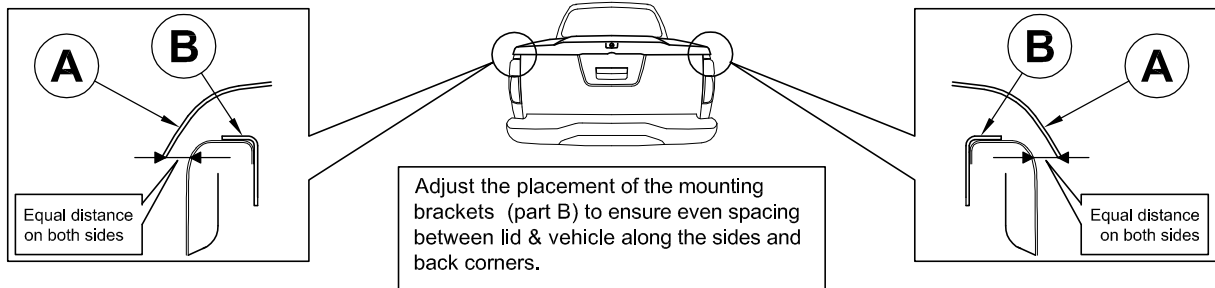
Fitting Kit Number	Manufacturer	Model Type	Year	Stockist	Cab Size	Product	Revision	Date	Page
IDFK134	Isuzu	RT50 D Max	2016	General Use	DC	Sportlid 1	5	05.07.16	1 of 3



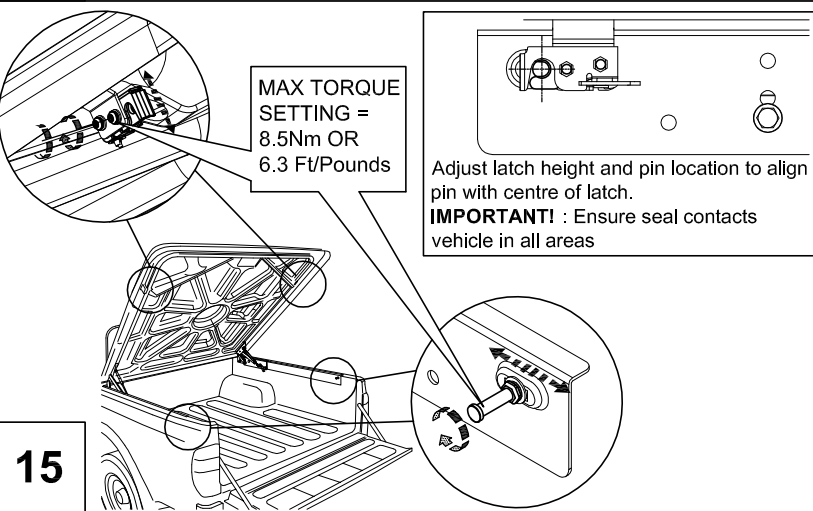
13



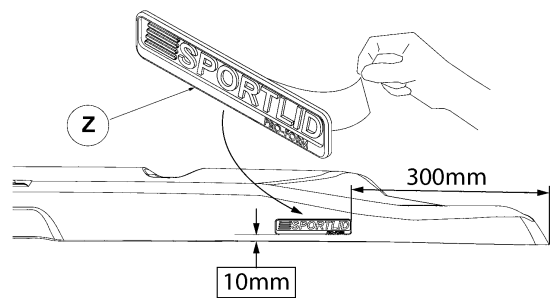
14



15



16



After required clearances and alignment is achieved, tighten all bolts to torque settings stated.

Retain these instructions for reference.

Fitting Kit Number	Manufacturer	Model Type	Year	Stockist	Cab Size	Product	Revision	Date	Page
IDFK134	Isuzu	RT 50 D Max	2016	General Use	DC	Sportlid 1	5	05.07.16	3 of 3